

# Facing

Each Classic Stone Mantel surround is available with matching surround facing (inset panel). Matching facing is available in economy 3 to 4 piece Adjustable Facing or Custom 1 Piece inset panel that is sized exactly for your firebox opening. The Custom 1 Piece facing is also available with four edge choices.

**NOTE** Majestic Series Mantels include a Custom 1 Piece Facing inset panel.

## Adjustable Facing (3 Piece) - Natural Stone ONLY

Adjustable Facing comes in 3 pieces that adjust to the width and height of your firebox (\*the 3 piece kit may have to be cut on site).



**Standard Adjustable Facing**



**Standard Adjustable Facing**



**Optional Riser Panel**

Request by phone or during measurement confirmation process for an additional charge

## Seamless Facing (1 Piece)

Seamless Custom Facing is a single piece sized exactly for your firebox opening.



**Standard Seamless Facing**



**Picture Frame Seamless Facing**  
Request by phone or during measurement confirmation process for an additional charge



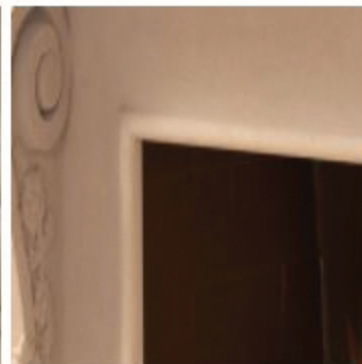
**Arched Seamless Facing**  
Request by phone or during measurement confirmation process for an additional charge

## Optional Seamless Facing Edges



**Bevelled**

Request by phone or during measurement confirmation process for an additional charge



**Half Round**

Request by phone or during measurement confirmation process for an additional charge



**OG**

Request by phone or during measurement confirmation process for an additional charge



**Arched**

Request by phone or during measurement confirmation process for an additional charge